

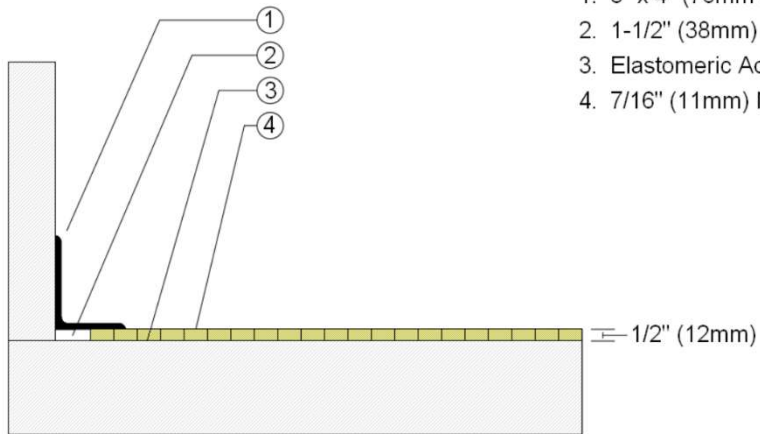


INFINITY
Wood Floors



AACER
SPORTS FLOORING

WALLBASE



1. 3" x 4" (76mm x 101mm) Vent Cove Base
2. 1-1/2" (38mm) min. Expansion Space
3. Elastomeric Adhesive
4. 7/16" (11mm) Maple Flooring

Description: SUPERBOND

Resilience:

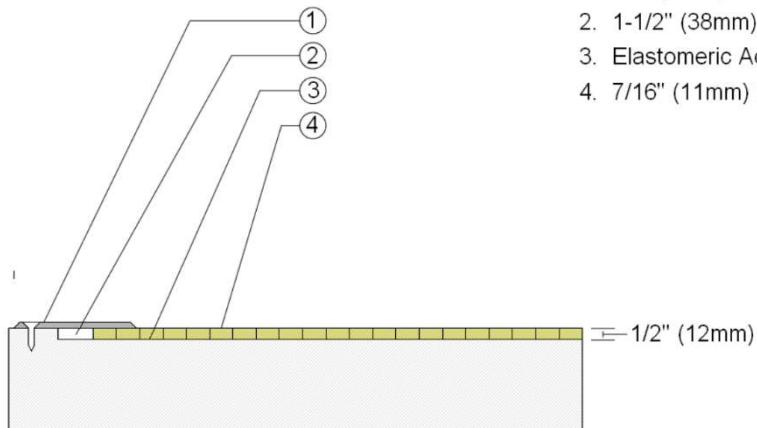
Drawn By: RR

Date: 4/12/23

Revisions

ID	Description	By	Date

THRESHOLD



1. 1/4" (6mm) Aluminum Threshold
2. 1-1/2" (38mm) min. Expansion Space
3. Elastomeric Adhesive
4. 7/16" (11mm) Maple Flooring

EQUIPMENT

1. Floor Plate
2. 1-1/2" (38mm) Expansion Space at all Inserts and Electrical Penetrations
3. Concrete Floor Penetration

